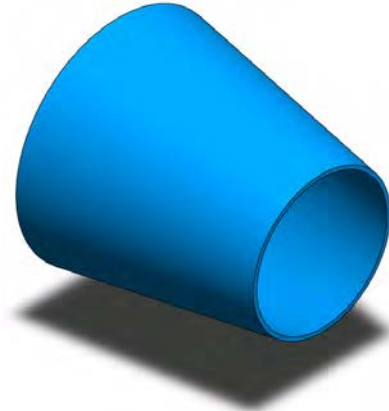


CONE TRANSITIONS

CT - SHORT



CTL - LONG



NOTES

- Standard Material is Carbon Steel.
- Cones can be Ordered in Longer Lengths and Heavier Materials up to 3/8" Thick.
- T-304, T-316, T-321, and Inconel 625 Construction is Also Available.
- Pipe Size Transitions are Available on Request.



Contact One Of Our Product Specialists For Assistance

