

ASSEMBLY CONFIGURATIONS

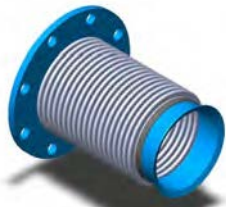
With nearly 40 years of experience, the design team at DME Incorporated will help you select the right product for your application. Shown below are more assembly configurations with the corresponding type number.

These examples, along with the other connectors in this catalog, will give you the basis to tell us exactly what you want for your particular system.

DME Incorporated maintains an extensive inventory of exhaust components and sub-assemblies, which allows us to manufacture custom assemblies quickly and efficiently. In turn, our customers save time and money in the field by not trying to make incompatible products fit their application requirements.



TYPE 6 - MALE NPT THREAD X SLOTTED CUFF



TYPE 7 - 20° LIP FLANGE X FLANGE



TYPE 8 - 20° LIP FLANGE X MALE NPT



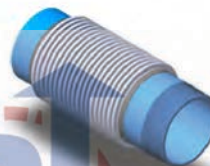
TYPE 14 - FLANGE X CONE REDUCING FLANGE



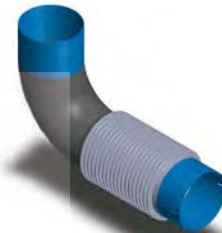
TYPE 15 - FLANGED 90° ELBOW X MALE NPT



TYPE 16 - FLANGED 90° ELBOW X FEMALE NPT COUPLING



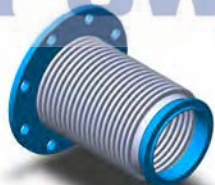
TYPE 18 - O.D. TUBE X MALE NPT



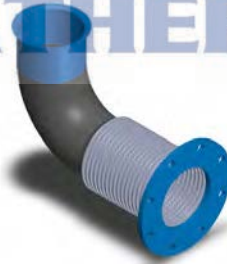
TYPE 19 - O.D. TUBE 90° ELBOW X SLOTTED CUFF



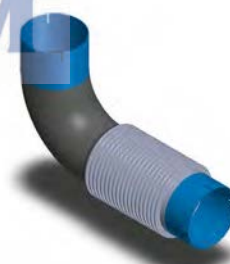
TYPE 20 - REDUCING O.D. TUBE X 90° ELBOW X FLANGE



TYPE 21 - TURBO FLANGE X FLANGE



TYPE 22 - 20° LIP FLANGE X 90° ELBOW X FLANGE



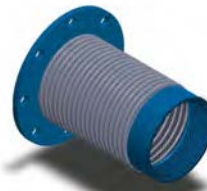
TYPE 23 - SLOTTED CUFF X 90° ELBOW X SLOTTED CUFF



TYPE 24 - O.D. TUBE X 90° ELBOW X FEMALE NPT COUPLING



TYPE 26 - MALE NPT X FEMALE NPT COUPLING



TYPE 27 - FEMALE NPT COUPLING X FLANGE



TYPE 29 - FLANGE X SPACER X MALE NPT



ASSEMBLY CONFIGURATIONS



TYPE 44 - 90° FLANGED ELBOW X
SLOTTED CUFF



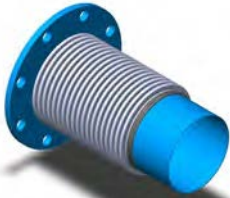
TYPE 45 - FIXED FLANGE X 45°
JOHN DEERE LIP FLANGE



TYPE 46 - 45° JOHN DEERE LIP
FLANGE X MALE NPT



TYPE 47 - 90° FLANGED ELBOW X
45° JOHN DEERE LIP FLANGE



TYPE 48 - FIXED FLANGE X
O.D. TUBE



TYPE 49 - SLOTTED CUFF X
O.D. TUBE



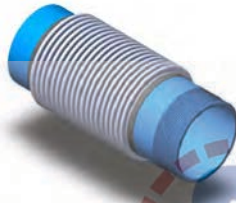
TYPE 51 - 90° SLOTTED CUFF
ELBOW X O.D. TUBE



TYPE 52 - 90° O.D. TUBE ELBOW X
O.D. TUBE



TYPE 53 - BEVELED WELD END
X MALE NPT



TYPE 54 - SQUARE CUT END X
MALE NPT



TYPE 55 - SLOTTED CUFF X
FEMALE NPT



TYPE 56 - FEMALE NPT EACH
END

