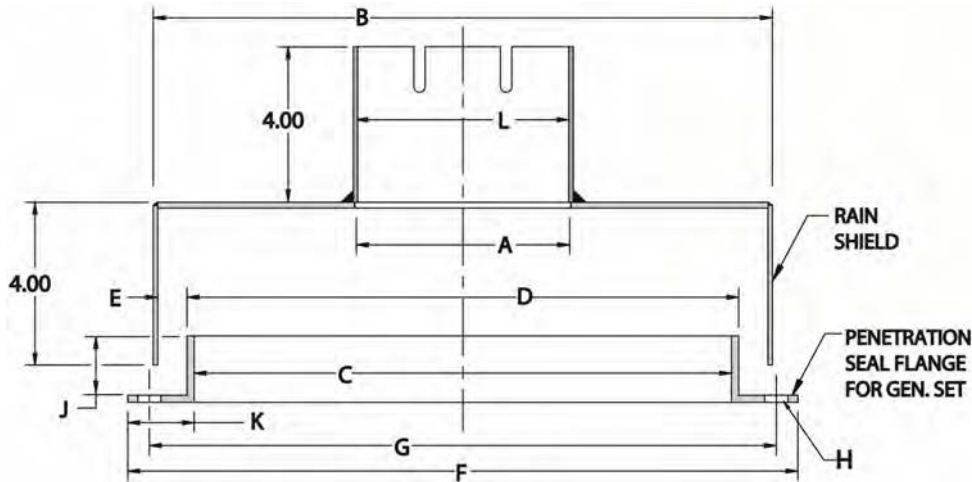


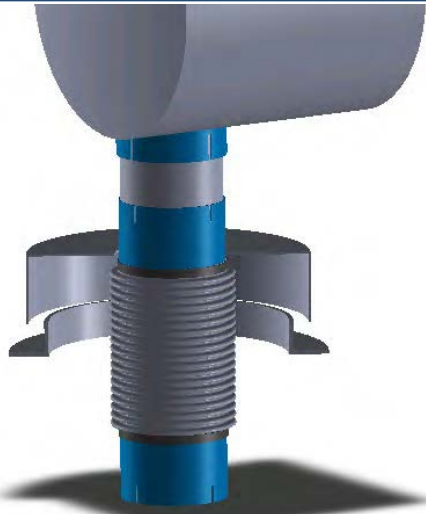
RAIN SHIELD ASSEMBLIES

RAIN SHIELD ASSEMBLY FOR GENERATOR ENCLOSURE



FLANGE SIZE	A I.D.	B	C I.D.	D O.D.	E	F	G D.B.C.	H HOLE DIA.	I # of HOLES	J	K	L CUFF I.D.	PART NUMBER
2" TUBE	2.06	4.00	3.06	3.34	0.50	5.06	4.31	0.281	6	0.88	1.00	2.040	SK3984-2T
2" PIPE	2.44	4.00	3.06	3.34	0.50	5.06	4.31	0.281	6	0.88	1.00	2.415	SK3984-2P
2.5" TUBE	2.56	4.00	3.06	3.34	0.50	5.06	4.31	0.281	6	0.88	1.00	2.540	SK3984-2.5T
2.5" PIPE	2.94	5.00	4.06	4.34	0.50	6.06	5.31	0.281	6	0.94	1.00	2.915	SK3984-2.5P
3" TUBE	3.06	5.00	4.06	4.34	0.50	6.06	5.31	0.281	6	0.94	1.00	3.040	SK3984-3T
3" PIPE	3.56	5.00	4.06	4.34	0.50	6.06	5.31	0.281	6	0.94	1.00	3.540	SK3984-3P
4" TUBE	4.06	6.00	5.06	5.34	0.50	7.06	6.31	0.281	6	1.00	1.00	4.040	SK3984-4T
4" PIPE	4.56	6.00	5.06	5.34	0.50	7.06	6.31	0.281	6	1.00	1.00	4.540	SK3984-4P
5" TUBE	5.06	8.63	6.09	6.38	0.50	8.09	7.31	0.281	6	1.00	1.00	5.040	SK3984-5T
5" PIPE	5.62	8.63	6.09	6.38	0.50	8.09	7.31	0.281	6	1.00	1.00	5.603	SK3984-5P
6" TUBE	6.06	8.63	7.13	7.41	0.50	9.63	8.50	0.38	6	1.00	1.13	6.040	SK3984-6T
6" PIPE	6.69	8.63	7.13	7.41	0.50	9.63	8.50	0.38	6	1.00	1.13	6.665	SK3984-6P
8" TUBE	8.06	10.63	9.13	9.41	0.50	11.63	10.63	0.44	6	1.13	1.25	8.060	SK3984-8T
8" PIPE	8.69	10.63	9.13	9.41	0.50	11.63	10.63	0.44	6	1.13	1.25	8.685	SK3984-8P
10" TUBE	10.06	12.63	11.13	11.41	0.50	13.38	12.75	0.44	6	1.25	1.13	10.060	SK3984-10T
10" P PE	10.81	12.63	11.13	11.41	0.50	13.38	12.75	0.44	6	1.25	1.13	10.810	SK3984-10P
12" TUBE	12.06	14.63	13.13	13.41	0.50	16.13	15.00	0.44	6	1.50	1.50	12.060	SK3984-12T
12" P PE	12.81	14.63	13.13	13.41	0.50	16.13	15.00	0.44	8	1.50	1.50	12.810	SK3984-12P
14" TUBE	14.06	16.00	15.13	15.50	0.50	18.13	17.00	0.44	8	1.50	1.50	14.060	SK3984-14

- All Steel Components are Painted With Black Enamel.
- Available in T-304 or T-316 Stainless Steel Construction.

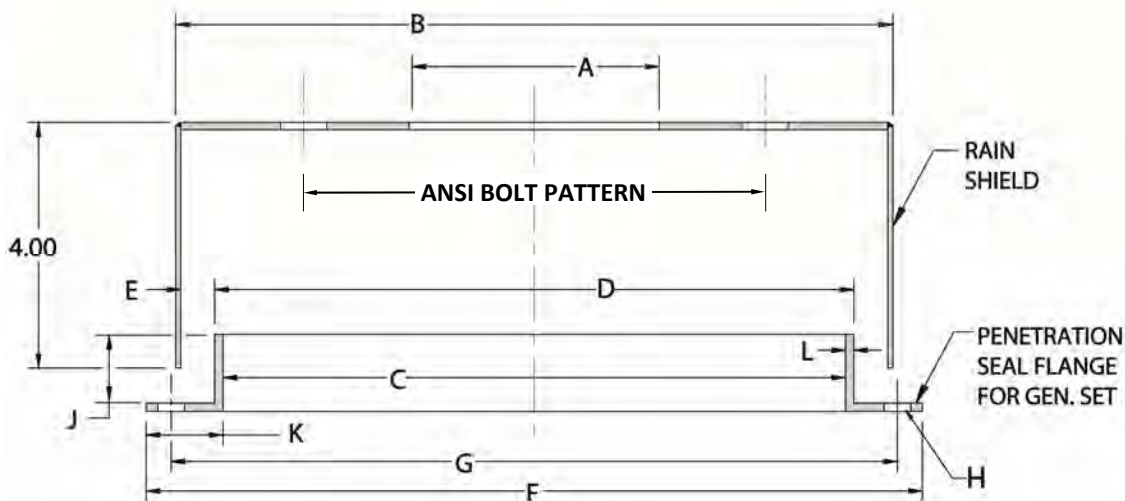


Product Specialists For Assistance



RAIN SHIELD ASSEMBLIES

RAIN SHIELD ASSEMBLY FOR GENERATOR ENCLOSURE



FLANGE SIZE	A I.D.	B	C I.D.	D O.D.	E	F	G D.B.C.	H HOLE DIA.	I # of HOLES	J	K	L THK.	PART NUMBER
4"	4.57	11.38	10.13	10.38	0.50	12.63	11.81	0.44	6	1.25	1.25	0.135	SK3284-4
5"	5.66	12.38	11.13	11.38	0.50	13.88	12.75	0.44	6	1.25	1.25	0.135	SK3284-5
6"	6.72	13.38	12.13	12.38	0.50	15.13	14.00	0.44	8	1.50	1.50	0.135	SK3284-6
8"	8.72	15.38	14.13	14.38	0.50	17.13	16.00	0.44	8	1.50	1.50	0.135	SK3284-8
10"	10.88	18.50	17.13	17.50	0.50	20.13	19.00	0.44	8	1.50	1.50	0.187	SK3284-10
12"	12.88	21.50	20.13	20.50	0.50	23.13	21.75	0.44	12	1.50	1.50	0.187	SK3284-12
14"	14.14	23.50	22.13	22.50	0.50	25.13	23.75	0.44	12	1.50	1.50	0.187	SK3284-14
16"	16.16	26.00	24.13	24.50	0.75	27.13	25.88	0.44	12	1.50	1.50	0.187	SK3284-16
18"	18.18	28.00	26.13	26.50	0.75	30.13	28.38	0.44	16	2.00	2.00	0.187	SK3284-18

- All Steel components are Paint Black Enamel.
- Available in T-304 or T-316 St Construction.



Contact One Of Our Product Specialists For Assistance

